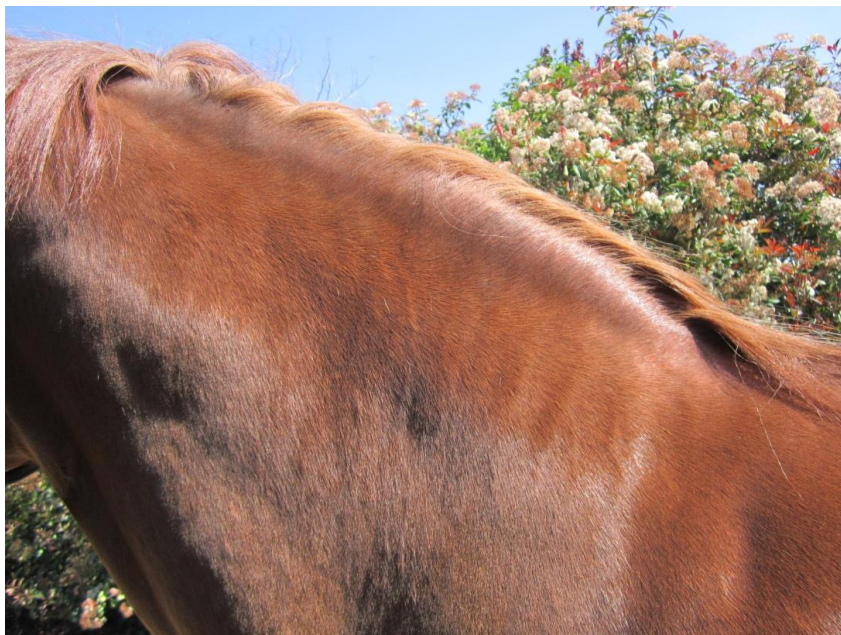


## **Requested Remote Consultation Photographs**

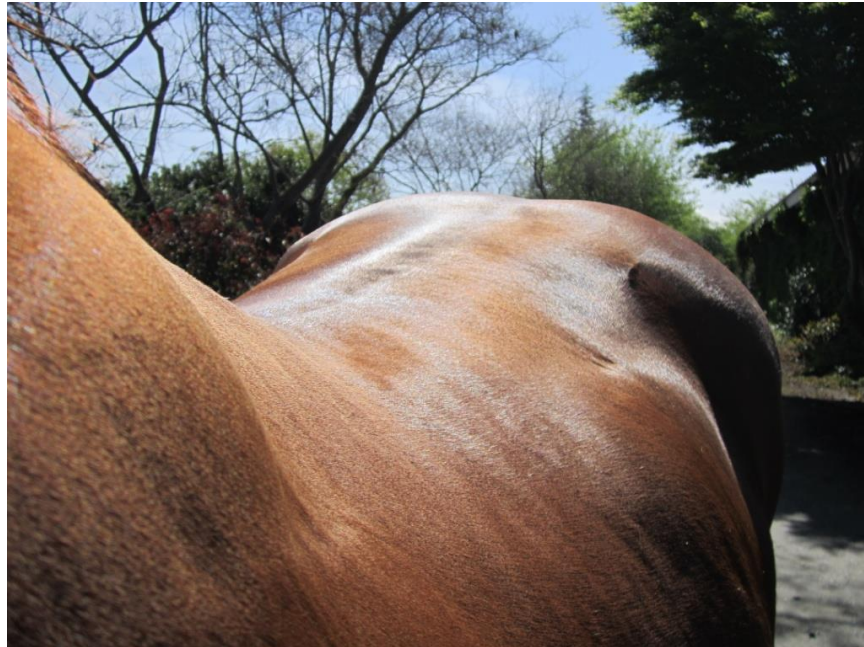
1. A good side on conformation shot ideally taken from the non-mane side. For horses with PSSM or MHM please place a piece of tape of known length on the side of the horse as a scale and stand back a known distance when taking the photo. This will allow for the image to be accurately repeated for comparison.



2. A photo of the neck from the ears to the withers taken on the non-mane side



3. A photo taken from the shoulder across the top of the back towards the loin



4. A photo taken from behind with the horse standing square capturing the area shown below. For the purposes of repeat pictures please make a note of how far away from the horse you are standing and the angle and height of the camera.



For horses with under developed hindquarters including those with PSSM or MHM place a piece of tape of known length on the horse so that muscle development can be easily monitored

5. A photo taken from beside the tail forwards across the rump towards the withers.



6. A photo taken from the side of the hind quarters focusing on the area from the stifle upwards.

